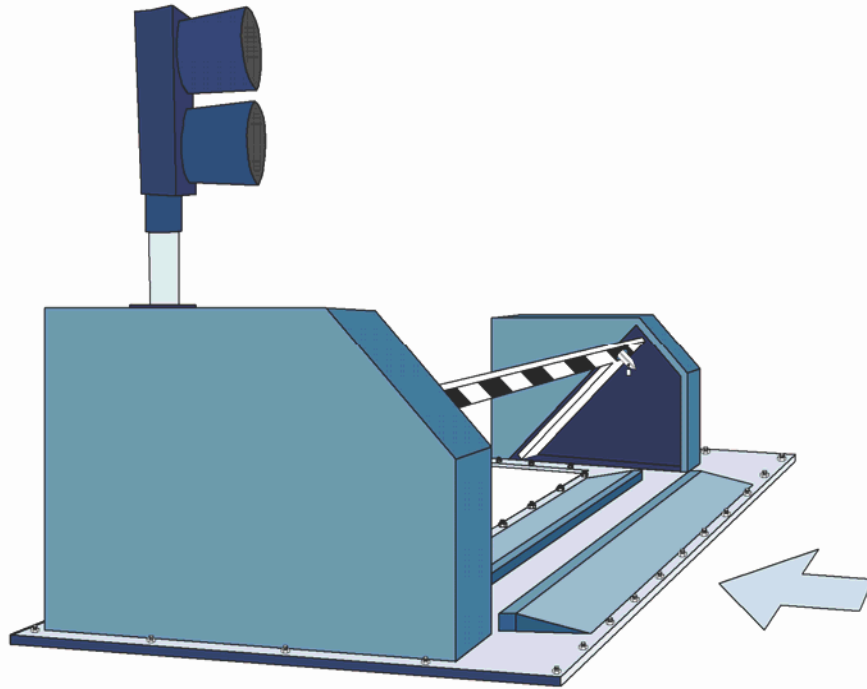


# CBG 120/240 (3/6mt)

The new CBG 120/240, automated hydraulic, surface mounted cable barrier gate, is designed primarily to prevent against Unauthorized vehicles from either or entering or exiting a secured control point. Using hydraulic and solid-state components, and with its Customizable control logic it can easily be adapted to variety of uses. (e.g., revenue control, rental car agency, security checkpoints, etc.).



## Traffic Control Widths (Clear Width):

10'-0" clear up to a maximum

18'-0" clear of traffic control can be controlled from a single barrier

## Operating Time:

Cycle to lower barrier 4 seconds

Cycle to raise barrier 4 seconds

## Drive Configuration:

Automated hydraulic control Power

unit, with tie-rod hydraulic cylinders.

## Electrical Power Requirements:

1½ HP, 115V, 60 HZ, 1PH. Min. Circuit Ampacity: 25A. Max.

BRKR/FUSE: 30A.

1½ HP, 208-230V, 60HZ, 1PH. Min. Circuit Ampacity: 15A. Max

BRKR/FUSE: 20A.

All power and signal wiring for the unit shall only be installed by a qualified person that has been approved by the Authority Having Jurisdiction (AHJ). Consult your local AHJ for approved electrical installation requirements.

Branch circuit breaker must be rated for "HACR" and "High Magnetic" and/or "HID" loads.

**Finish:** Powder Coat (Red or Yellow)

## Control Circuit:

The machine is completely pre-wired requiring only the connection of the power feed and the control circuits. The circuits and power connections are terminated at the wire connector strips in the electrical Control box located in the locked hydraulic control cabinet. The controls are pre-wired to accommodate a Wide range of control options including: remote open and close from multiple locations; radio open and Close; open by card reader, key switch or vehicle detector.

## Documentation:

Each machine is furnished with the following:

Mechanical Installation Instructions, Electrical & Control Installation, Start Up Procedures, Trouble Shooting, Electrical, Mechanical Drawings

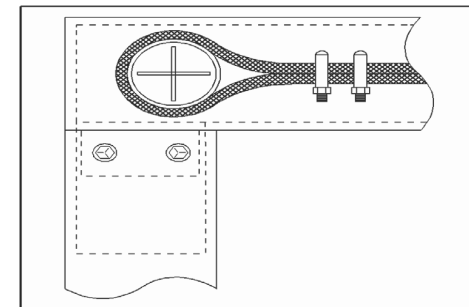
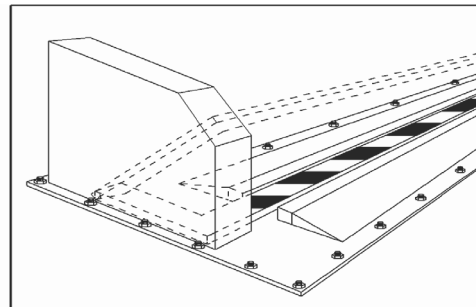
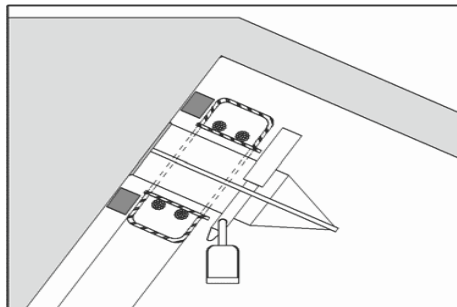
## Options:

Stop-Go Signal, Radio Receiver-Remote Radio Control, High Security Card Readers, Key Lock Switch, Directional Indication System.

## Shipping Weight:

This machine is modularized for ease of shipping and handling.

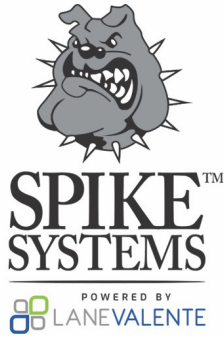
Weights vary depending upon length. Please call for specific weigh



LANEVALENTE

1-877-29SPIKE (297-7453)  
LVUSA.COM

98 MAPLE AVE. SMITHTOWN, NY 11787



# **CBG 120/240 (3/6mt)**

## **BARRICADE CONTROL**

The control circuit is designed to accept a wide range of control signals. Radio, card readers, key switches, remote-control push-button stations or other security systems can be readily interfaced with the standard circuit. In short, any device that will cause a contact closure or opening can be handled. Recent applications have included the use of inductive loops to sense vehicle direction for automatic deployment of the barricades. All barricade systems come with complete wiring schematics and instructions.

## **OPERATING MODE**

The barricades in this series can be operated from either a normally down or normally up mode. In most applications the barricade is in the guard position except when admitting the authorized vehicle. Other sites have the barrier normally down and only in an emergency or other special circumstance is it raised. No special provisions or changes are necessary in the basic system to operate in either mode.

## **POSITIONING OF BARRICADES**

The barricades in this series can be mounted in either a level driveway or on a ramp with no change in operating parameters.

## **INSTANT REVERSE**

The barriers can be instantly reversed at any point in their operation cycle, i.e., full down, full up, moving down or moving up.

## **TRAFFIC LIGHTS**

Red and yellow traffic signal lights are available. These traffic lights operate in conjunction with the barricade(s) with the red signal going on as the barrier begins to rise, and the yellow only when the barricade is down and clear.

## **WARNING SIGNS**

Reflective warning signs are available with safety cautions such as "Barricades Ahead, Prepare To Stop!" or special messages prepared in any language.

## **SAFETY LOOPS**

In high traffic cycle operations, guards can make errors by pushing controls at the wrong time, lifting authorized vehicles. If vehicle sensing loops are placed in the roadway directly in front and behind the barricade, the coupled loop detector will suppress accidental operation.